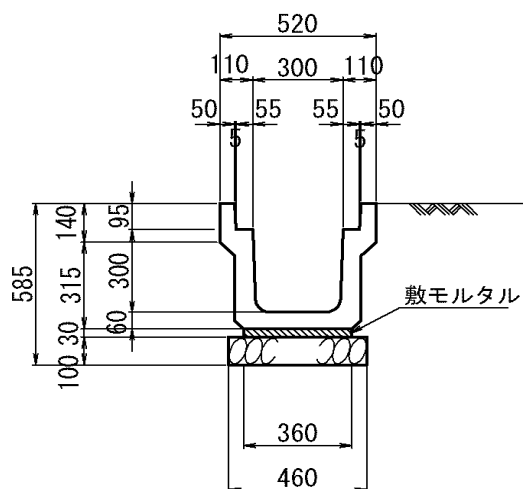


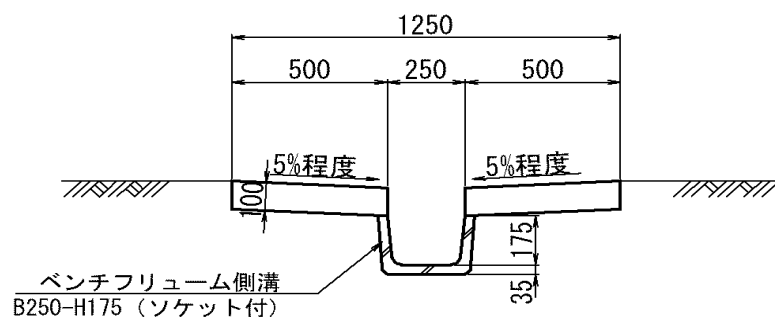
PU3-B300-H300


$$L = \quad m$$

10m当り

[illegible]

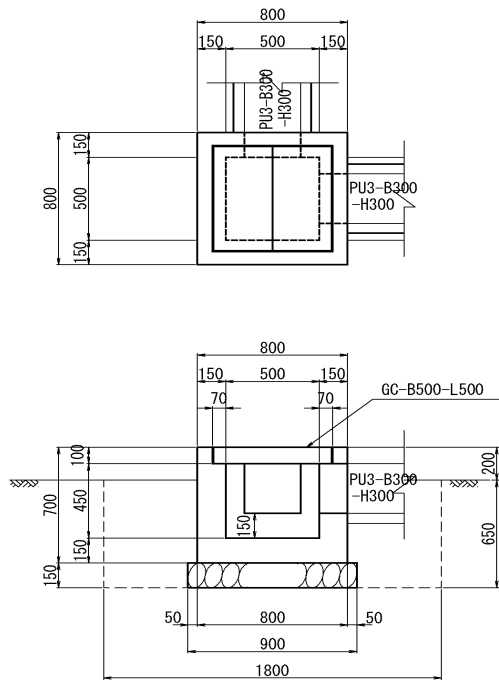
PU1-B300-H300


$$L = m$$

10m当り

[illegible]

G1-B500-L500-H450



N=           ヶ所

ヶ所当り

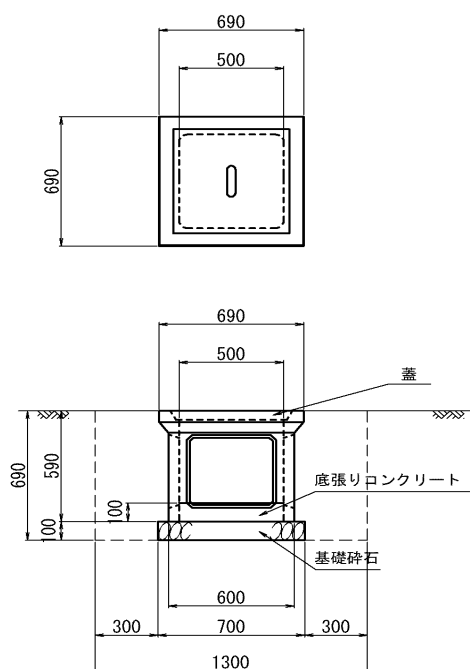
名 称	規 格	算 式	単位当り数量	延長・ヶ所	数 量
コンクリート		$0.80 \times 0.80 \times 0.70 - 0.64 \times 0.64 \times 0.10 -$			
		$0.50 \times 0.50 \times 0.45 =$			
		0.295	0.295 m <sup>3</sup>	-	- m <sup>3</sup>
型 枠		$0.80 \times 0.70 \times 4 + 0.64 \times 0.10 \times 4 + 0.50 \times 0.60 \times 4 =$			
		3.696	3.696 m <sup>2</sup>	-	- m <sup>2</sup>
基礎碎石	RC-40 t=150	$0.90 \times 0.90 =$	0.810	0.810 m <sup>2</sup>	- m <sup>2</sup>
柵 蓋	GC-B500-L500		2.0 枚	-	- 枚
床 掘		$1.80 \times 1.80 \times 0.65 =$			
		2.11	2.1 m <sup>3</sup>	-	- m <sup>3</sup>
埋 戻		$2.11 - 0.90 \times 0.90 \times 0.15 - 0.80 \times 0.80 \times 0.50 =$			
		1.67	1.7 m <sup>3</sup>	-	- m <sup>3</sup>
基面整正		$0.90 \times 0.90 =$	0.81	0.8 m <sup>2</sup>	- m <sup>2</sup>

G2-B500-L500-H500

The drawing consists of two views: a top view and a side view. The top view shows a square unit with a central square opening. Dimensions include an overall width of 800, a central opening width of 500, and side margins of 150. The height is also 800, with a central opening height of 500 and side margins of 150. A vertical dimension of 300 is shown for the central opening. A label '縦排水' (Vertical Drainage) is present. The side view shows the unit's profile with a total width of 1800, including 50mm side margins. The unit's height is 800. The central opening has a height of 500 and a width of 500. A vertical dimension of 300 is shown for the central opening. A label '縦排水' (Vertical Drainage) is present.

N=                      ヶ所

[illegible]

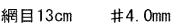


N=           ヶ所

ヶ所当り

[illegible]

## フトンかご

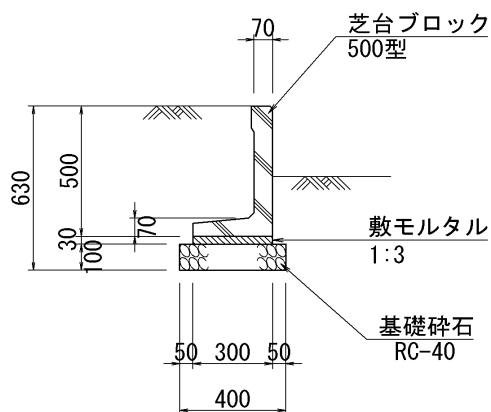


N= 枚

10m当り

[illegible]

## 芝台ブロック



N= 枚

10m当り

[illegible]